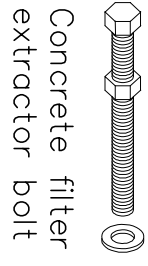
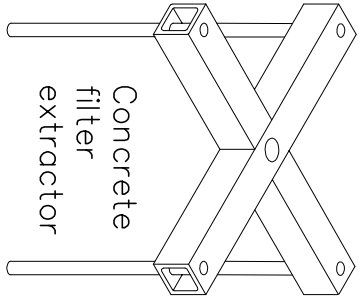


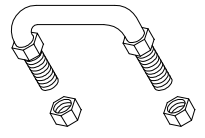
Cover Plate



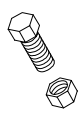
Concrete filter extractor bolt



Concrete filter extractor



Handles — 4 required



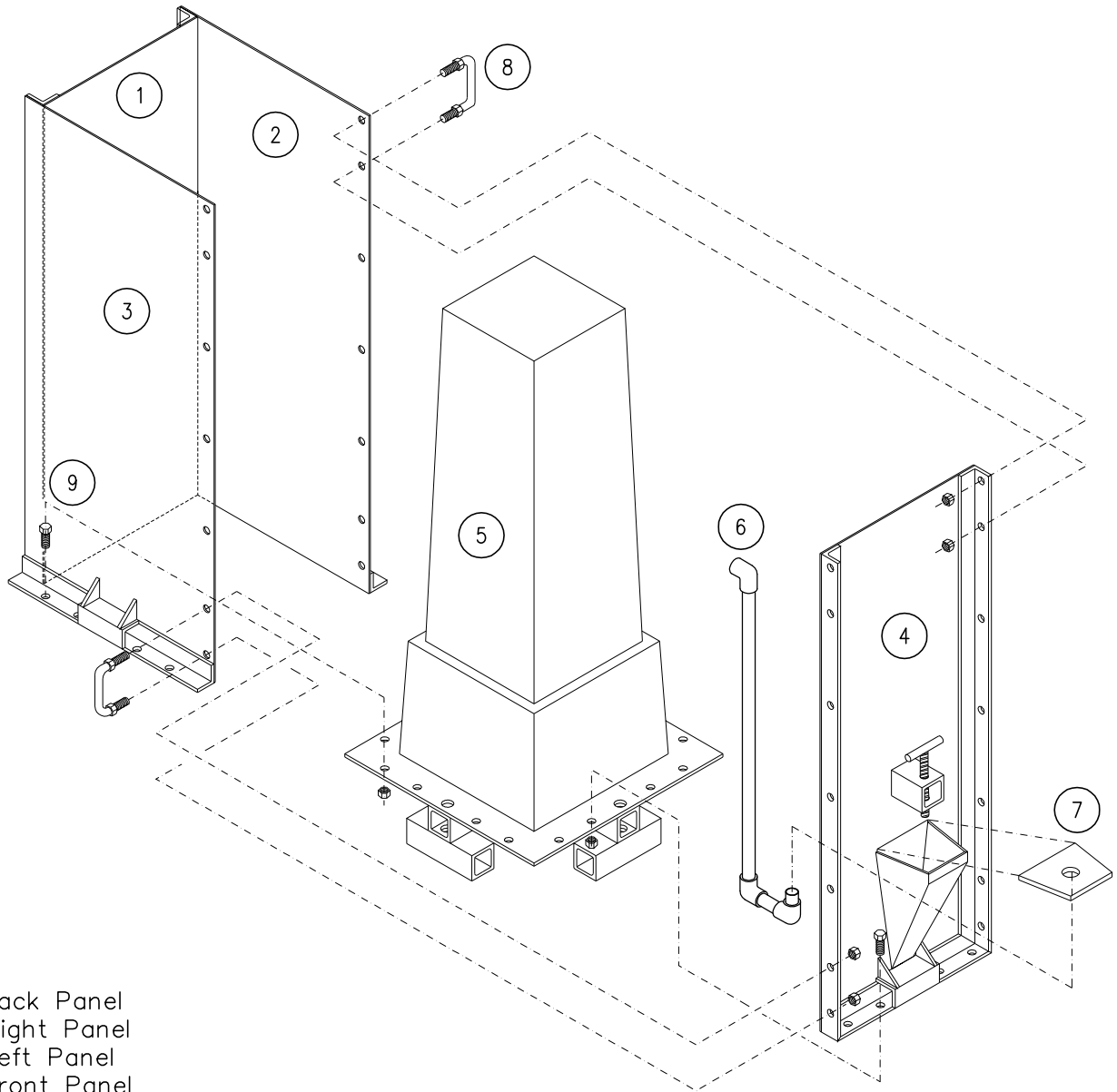
Bolts c/w nuts
1/2" dia. x 1"
22 required

CAWST (Centre for Affordable Water and Sanitation Technology)


Steel Mold Components

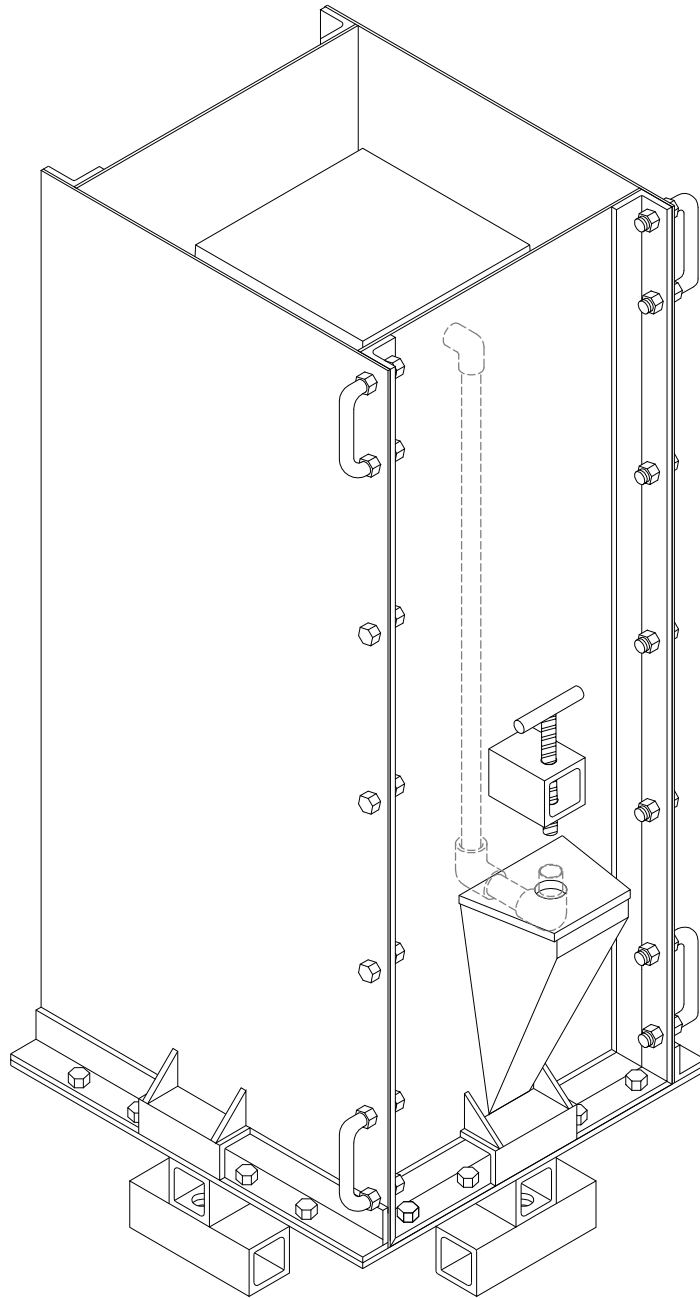


DRAWN	DATE	SCALE	DRAWING NO.	SHEET
	March 2003	NTS	SMC — 1	1 / 1



- 1 – Back Panel
- 2 – Right Panel
- 3 – Left Panel
- 4 – Front Panel
- 5 – Interior Mold
- 6 – Standpipe
- 7 – Cover Plate
- 8 – Handles, 4 required, 2 shown
- 9 – Bolts c/w nuts, 22 required, 2 shown

CAWST (Centre for Affordable Water and Sanitation Technology)			
Steel Mold Components – Assembly			
DRAWN	DATE March 2003	SCALE NTS	DRAWING NO. SMC – 2
			SHEET 1 / 1



CAWST (Centre for Affordable Water and Sanitation Technology)

Steel Mold Components – Assembled



DRAWN

DATE

March 2003

SCALE

NTS

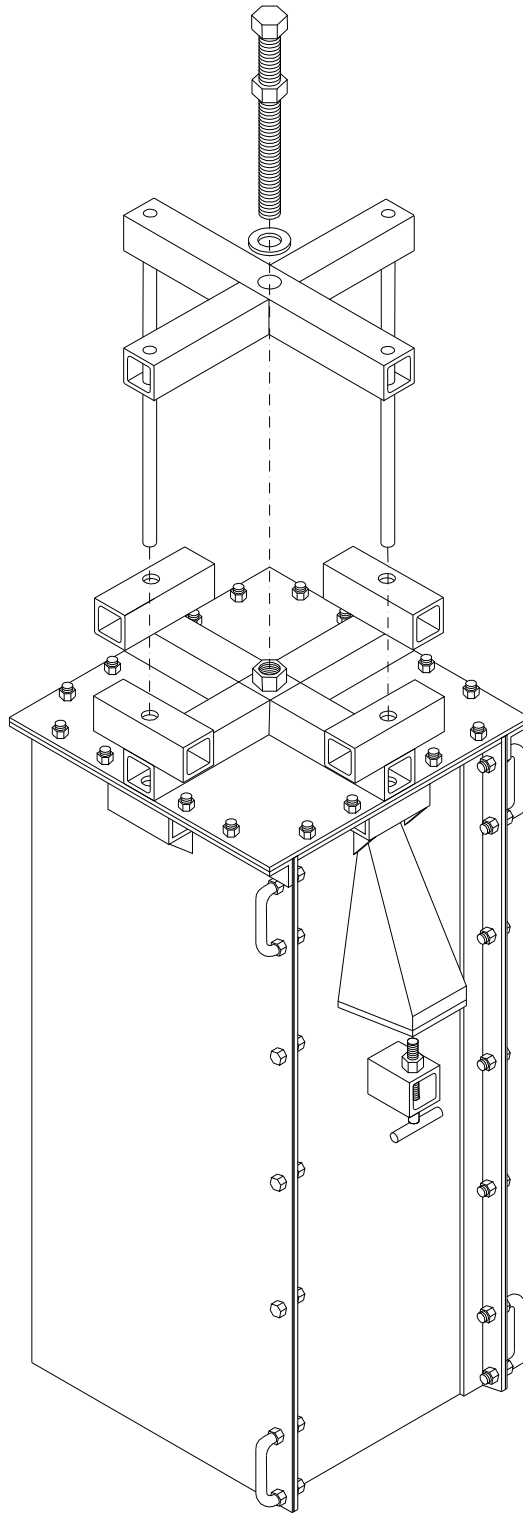
DRAWING NO.

SMC – 3

SHEET

1

1



CAWST (Centre for Affordable Water and Sanitation Technology)

Steel Mold Components – Filter Removal



DRAWN

DATE

March 2003

SCALE

NTS

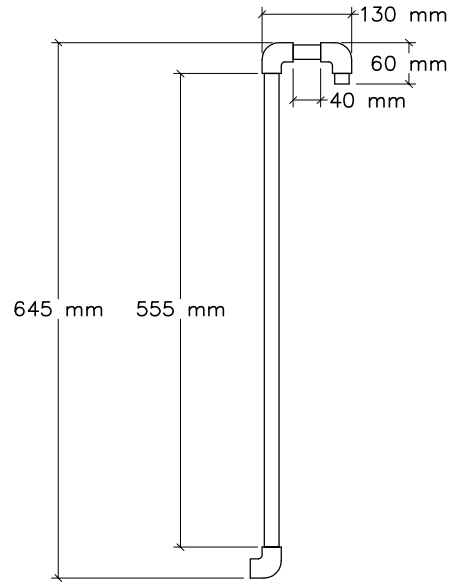
DRAWING NO.

SMC – 4

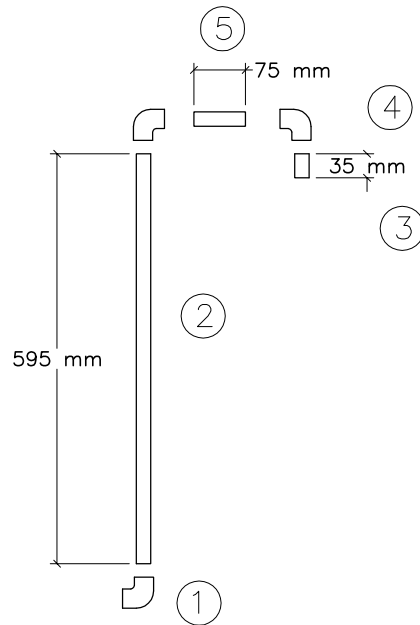
SHEET

1

1




Assembled Standpipe

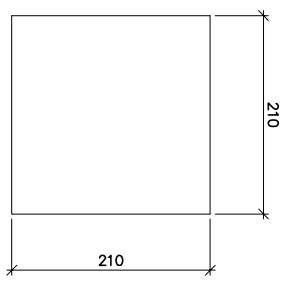
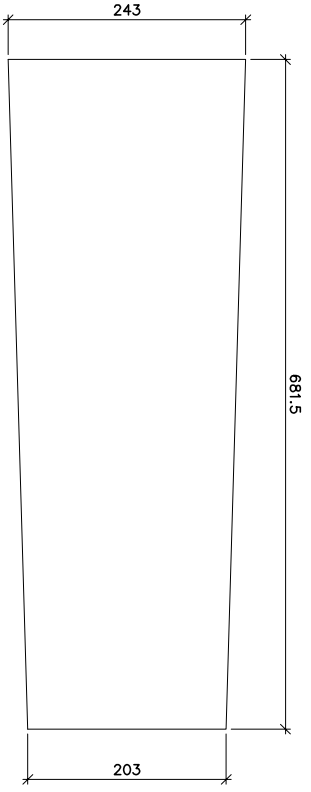
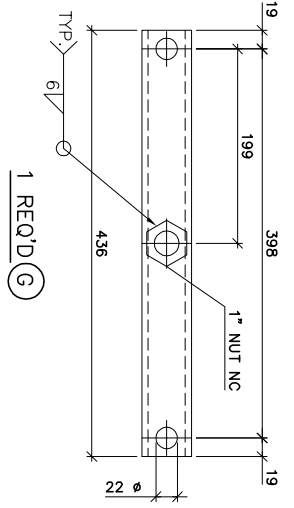
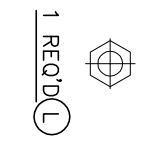
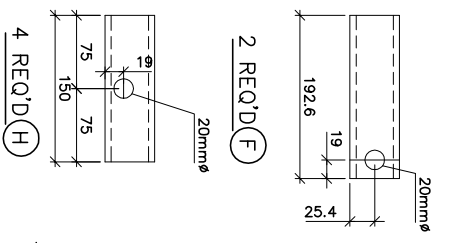
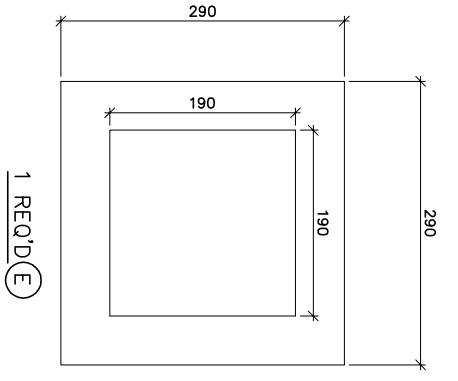
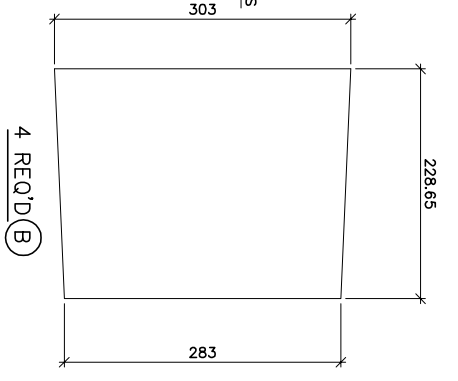
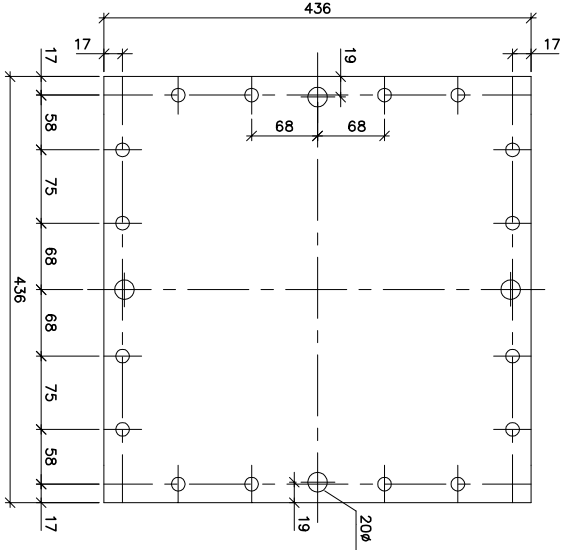


Standpipe Components

- 1 – 1/2” PVC elbow
- 2 – 1/2” PVC pipe, 595 mm
- 3 – 1/2” PVC pipe, 35 mm
- 4 – 1/2” elbow, 2 required
- 5 – 1/2” PVC pipe, 75 mm

CAWST (Centre for Affordable Water and Sanitation Technology)				
Steel Mold Components – PVC Standpipe				
DRAWN	DATE March 2003	SCALE NTS	DRAWING NO. SMC – 5	SHEET 1 / 1

WELDED	CHECKED	FITTED	CUT
--------	---------	--------	-----



INTERIOR MOLD PIECES

MARK	QNT	DESCRIPTION	LENGTH	REMARKS	MARK	QNT	DESCRIPTION	LENGTH	REMARKS
A	4	PL 3.5mm 203/243	681.5		H	4	HSS 50.8 x 50.8 x 6.35	150	
B	4	PL 3.5mm 283/303	228.65		L	ONE	1" NUT NC		
C	ONE	PL 6.35mm 436	436						
D	ONE	PL 3.5mm 210	210						
E	ONE	PL 6.35mm 290	290						
F	2	HSS 50.8 x 50.8 x 6.35	192.6						
G	ONE	HSS 50.8 x 50.8 x 6.35	436						

QNT	TYPE	LEN
	FIELD BOLTS	
HOLES: 14 mm Dia.		
PAINT: No Paint		
MAT. SPEC: 300W		

NUMBER	DATE	BY

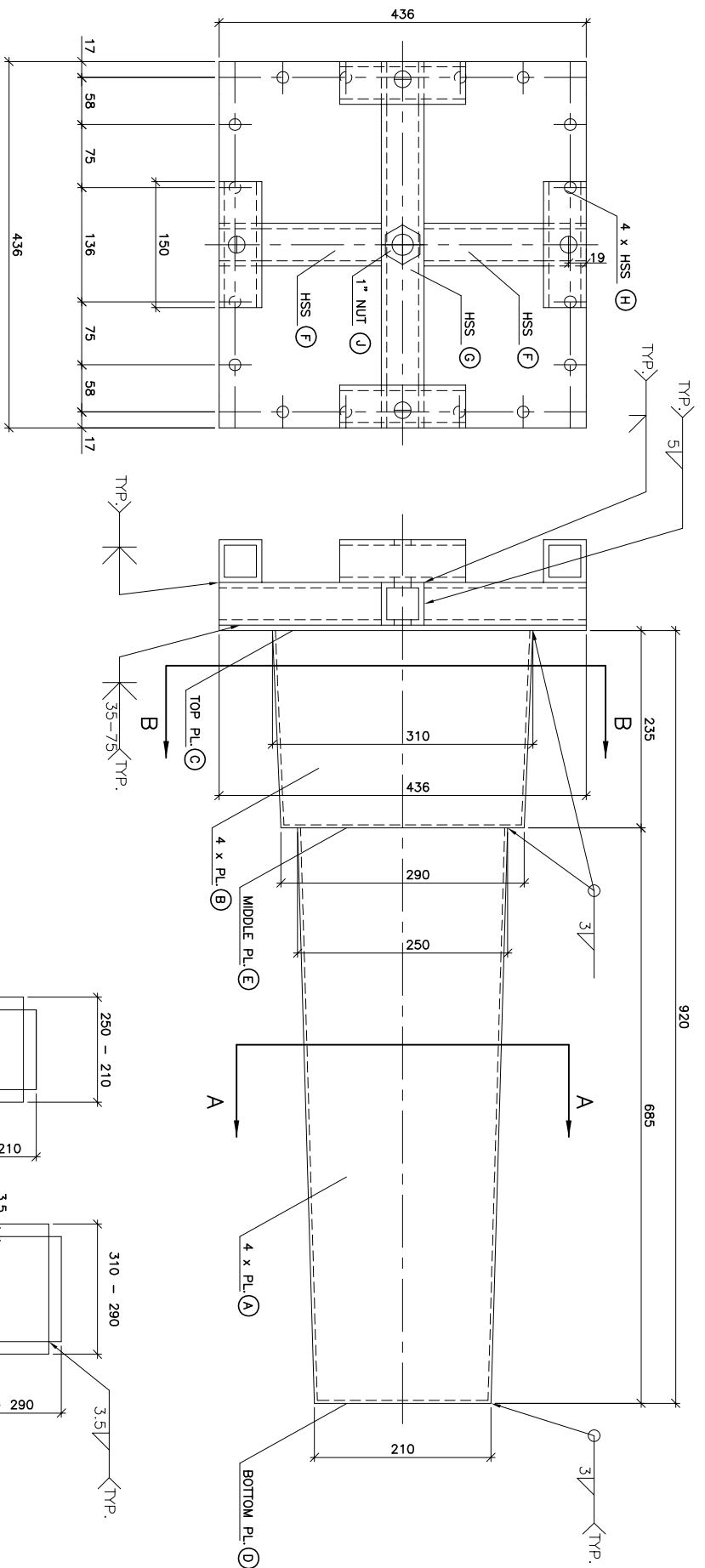
DRAWN	TAR	MARCH 2003	CUSTOMER
CHK'D BY	R. LENTZ		
DWG REF			PROJECT
BIOSAND FILTER - STEEL MOLD			STEEL MOLD



DWG # 1



CUT	FITTED	CHECKED	WELDED
-----	--------	---------	--------



INTERIOR MOLD ASSEMBLY DRAWING

MARK	QNT	DESCRIPTION	LENGTH	REMARKS	MARK	QNT	DESCRIPTION	LENGTH	REMARKS
A	4	PL 3.5mm 203/243	681.5		H	4	HSS 50.8 x 50.8 x 6.35	150	
B	4	PL 3.5mm 283/303	228.65		J	ONE	1" NUT NC		
C	ONE	PL 6.35mm 436	436						
D	ONE	PL 3.5mm 210	210						
E	ONE	PL 6.35mm 290	290						
F	2	HSS 50.8 x 50.8 x 6.35	192.6						
G	ONE	HSS 50.8 x 50.8 x 6.35	436						

QNT	TYPE	LEN
	FIELD BOLTS	
	HOLE: 14 mm Dia.	
	PAINT: No. Paint	
	MAT. SPEC: 300W	

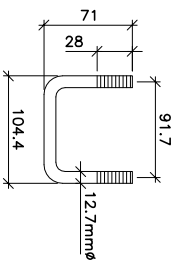
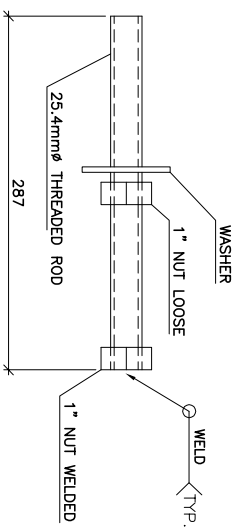
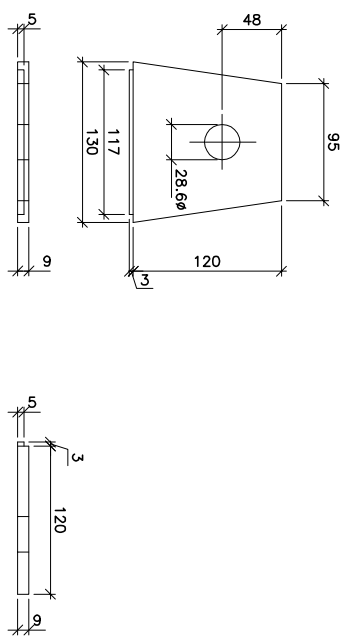
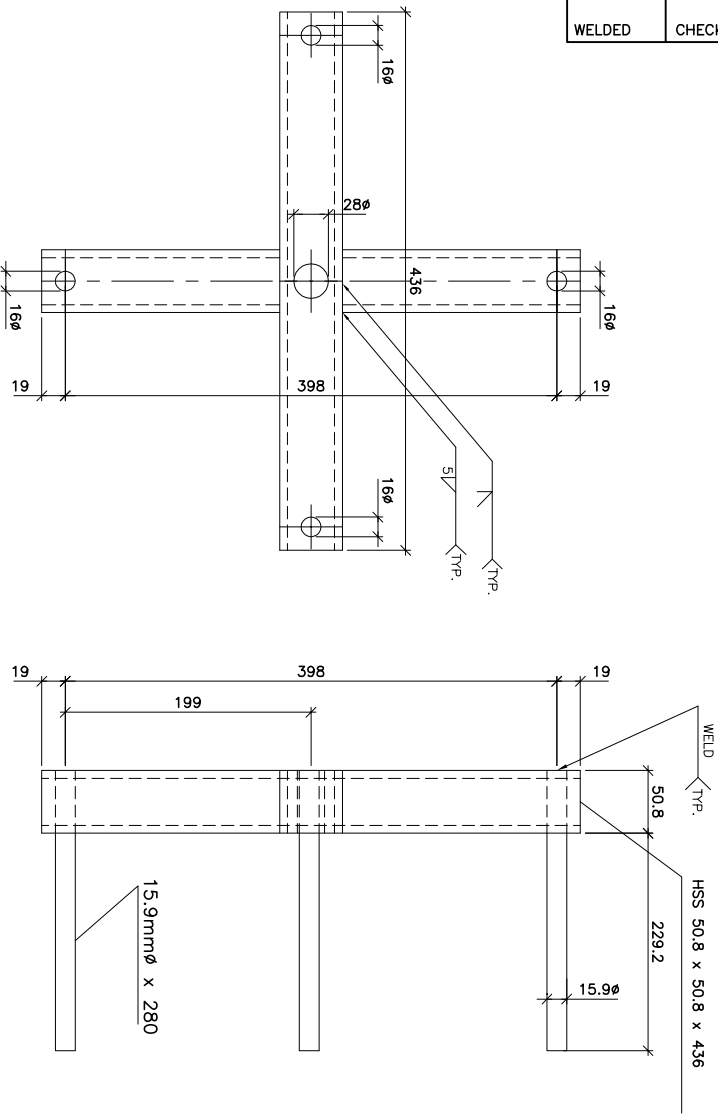
NUMBER	DATE	BY	SUBJECT
DRAWN	TAR	MARCH 2003	CUSTOMER
CHK'D BY	R. LENTZ		PROJECT
DWG REF			STEEL MOLD
BIOSAND FILTER - STEEL MOLD			



DWG # 2



CUT	FITTED	CHECKED	WELDED
-----	--------	---------	--------



CONCRETE FILTER EXTRACTOR

MARK	QNT	DESCRIPTION	LENGTH	REMARKS	MARK	QNT	DESCRIPTION	LENGTH	REMARKS
A	ONE	ASSEMBLY	436	EXTRACTOR COVERPLATE					
B	ONE	PL 9mm 95/130	120	EXTRACTOR BOLT					
C	ONE	ASSEMBLY	287	EXTRACTOR HANDLES					
D	4	ASSEMBLY	104.4						

QNT	TYPE	LEN
	FIELD BOLTS	

HOLES: As Noted
PAINT: No Point
MAT. SPEC: 300W

NUMBER	DATE	BY	SUBJECT
TAR	MARCH 2003	R. LENITZ	STEEL MOLD

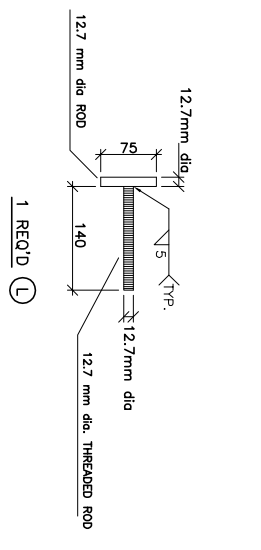
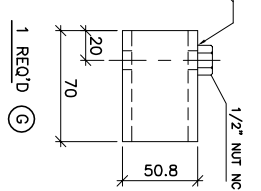
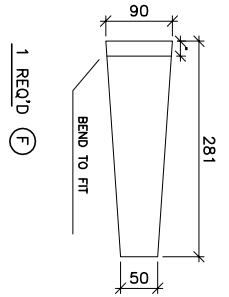
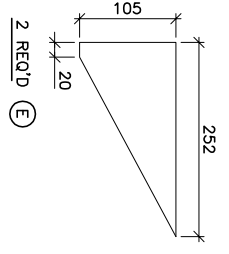
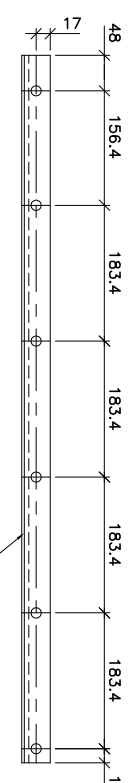
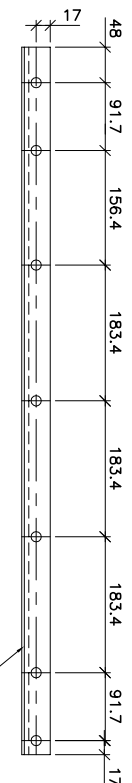
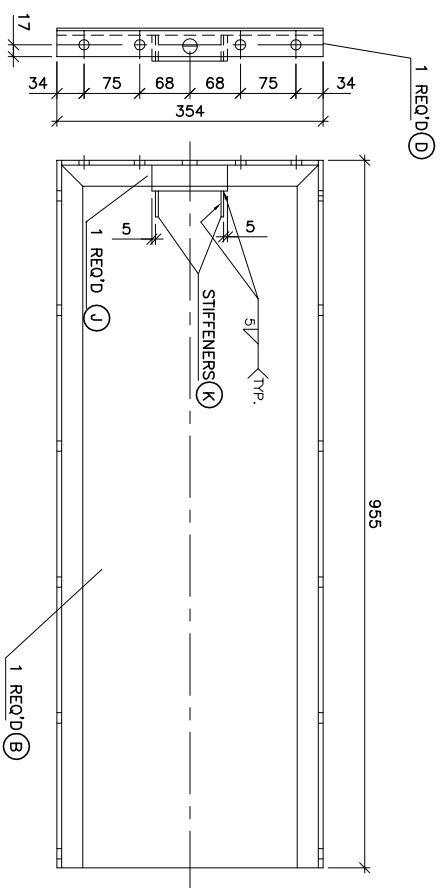
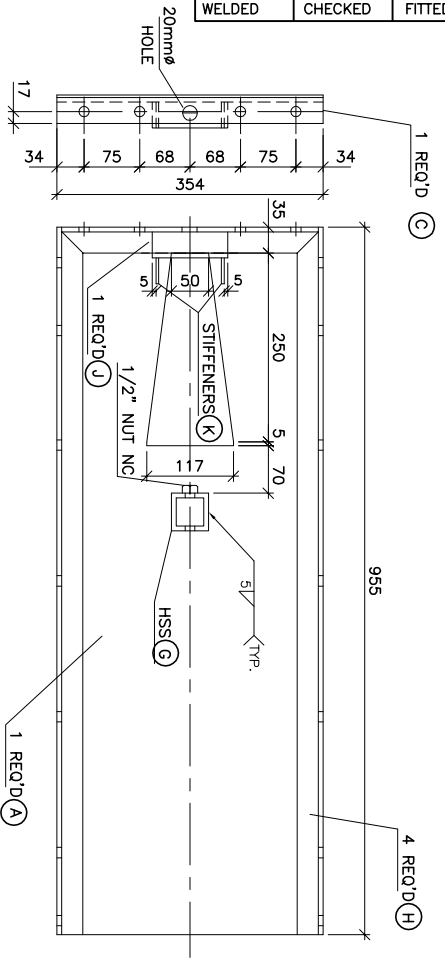
CHK'D BY: R. LENITZ
DWG REF:
PROJECT: STEEL MOLD

BIOSAND FILTER - STEEL MOLD

DWG # 3

REV #

CUT	FITTED	CHECKED	WELDED
-----	--------	---------	--------

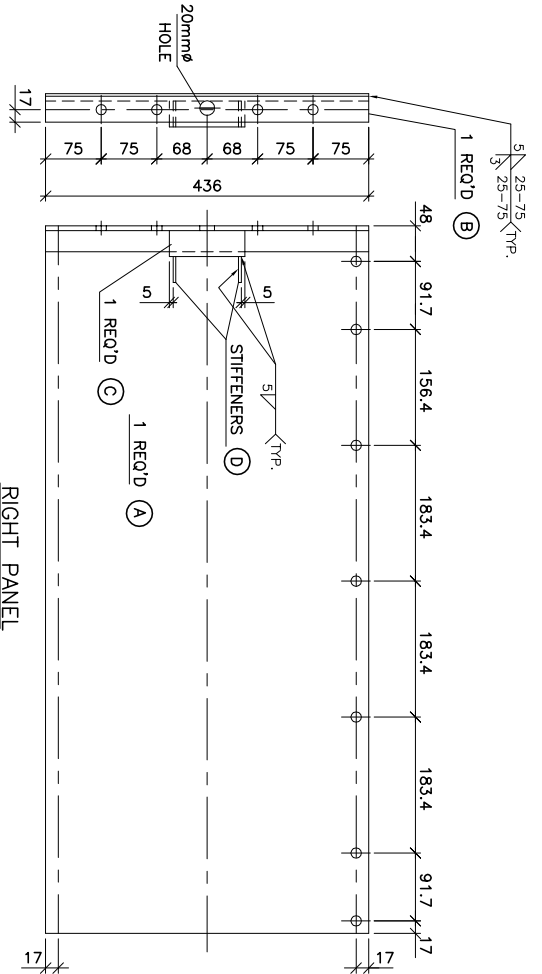


MARK	QNT	DESCRIPTION	LENGTH	REMARKS	MARK	QNT	DESCRIPTION	LENGTH	REMARKS
A	ONE	PL 3.5mm 354	955		J	2	L 35 x 35 x 6.35	102	
B	ONE	PL 3.5mm 354	955		K	4	PL 3.5 x 35	35	
C+D	2	L 35 x 35 x 6.35	359		L	1	ASSEMBLY	140	
E	2	PL 3.5mm 105	252						
F	ONE	PL 3.5mm 50/90	281						
G	ONE	HSS 50.8 x 50.8 x 6.35	70						
H	4	L 35 x 35 x 6.35	955						

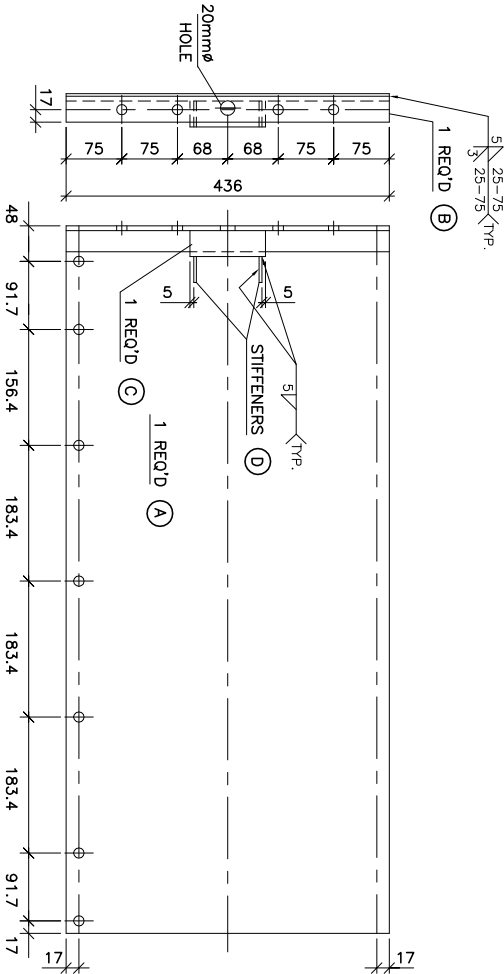
QNT	TYPE	LEN
	FIELD BOLTS	
	HOLS: 14 mm Dia	
	PAINT: No Paint	
	MAT. SPEC: 300W	

NUMBER	DATE	BY	SUBJECT
DRAWN	TAR	MARCH 2003	CUSTOMER
CHK'D BY	R. LENITZ		
DWG REF			PROJECT
			STEEL MOLD
BIOSAND FILTER - STEEL MOLD			
DWG #	4		
REV #			

WELDED	CHECKED	FITTED	CUT
--------	---------	--------	-----



RIGHT PANEL



LEFT PANEL

RIGHT AND LEFT PANEL DETAIL

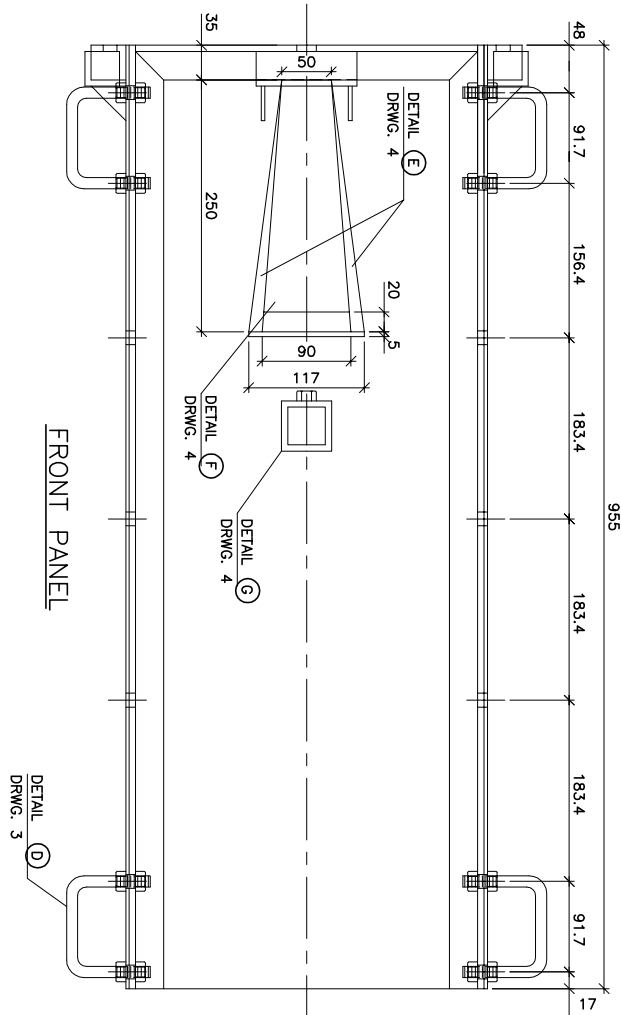
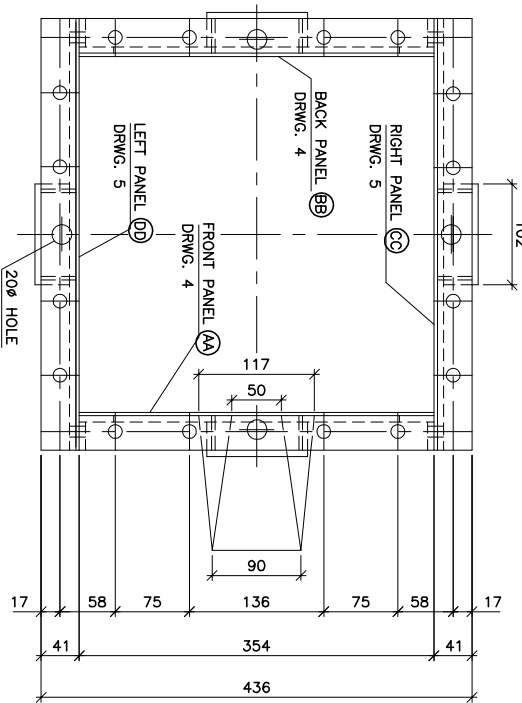
MARK	QNT	DESCRIPTION	LENGTH	REMARKS	MARK	QNT	DESCRIPTION	LENGTH	REMARKS
A	2	PL 3.5mm 436	955						
B	2	L 35 x 35 x 6.35	436						
C	2	L 35 x 35 x 6.35	102						
D	4	PL 3.5 x 35	35						

Holes: 14 mm Dia.		QNT	TYPE	LEN
PANT: No Point			FIELD BOLTS	
MNT. SPEC: 300W				

NUMBER	DATE	BY	SUBJECT
DRAWN	TAR	MARCH 2003	CUSTOMER
CHK'D BY	R. LENTZ		PROJECT
DWG REF			STEEL MOLD

BIOSAND FILTER - STEEL MOLD	
DWG #	5
REV #	

WELDED	CHECKED	FITTED	CUT
--------	---------	--------	-----



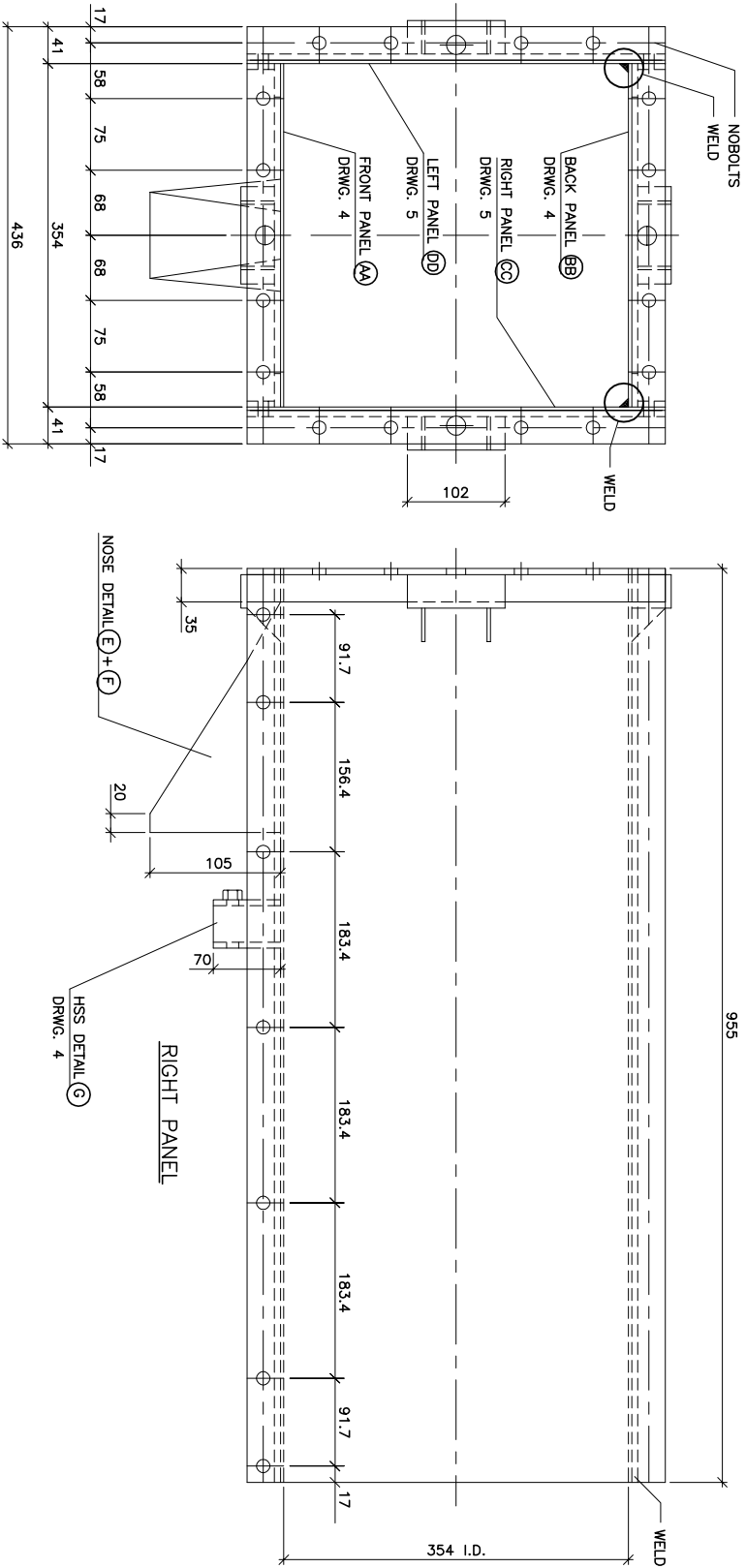
ASSEMBLY DRAWING

MARK	QNT	DESCRIPTION	LENGTH	REMARKS	MARK	QNT	DESCRIPTION	LENGTH	REMARKS
AA	ONE	FRONT PANEL	955						
BB	ONE	BACK PANEL	955						
CC	ONE	RIGHT PANEL	955						
DD	ONE	LEFT PANEL	955						
D	4	HANDLE ASSEMBLY	104.4						

QNT	TYPE	LEN
	FIELD BOLTS	
HOLES: 14 mm dia.		
PAINT: No Point		
MAT. SPEC: 300W		

NUMBER	DATE	BY	SUBJECT
DRAWN	TAR	MARCH 2003	CUSTOMER
CHK'D BY	R. LENTZ		PROJECT
DWG REF			STEEL MOLD
BIOSAND FILTER - STEEL MOLD			
DWG #	6	REV #	

CUT	FITTED	CHECKED	WELDED
-----	--------	---------	--------



ASSEMBLY DRAWING

MARK	QNT	DESCRIPTION	LENGTH	REMARKS	MARK	QNT	DESCRIPTION	LENGTH	REMARKS
AA	ONE	FRONT PANEL DETAIL	955						
BB	ONE	BACK PANEL DETAIL	955						
CC	ONE	RIGHT PANEL DETAIL	955						
DD	ONE	LEFT PANEL DETAIL	955						
E	2	PL 3.5mm 105	252						
F	ONE	PL 3.5mm 50/90	281						
G	ONE	HSS 50.8 x 50.8 x 6.35	70						

QNT	TYPE	LEN
	FIELD BOLTS	
HOLES: 14 mm Dia.		
PAINT: No Point		
MAT. SPEC: 300W		

NUMBER	DATE	BY	SUBJECT
DRAWN	TAR	MARCH 2003	CUSTOMER
CHK'D BY	R. LENTZ		PROJECT
DWG REF			STEEL MOLD
BIOSAND FILTER - STEEL MOLD			
DWG #	7	REV #	